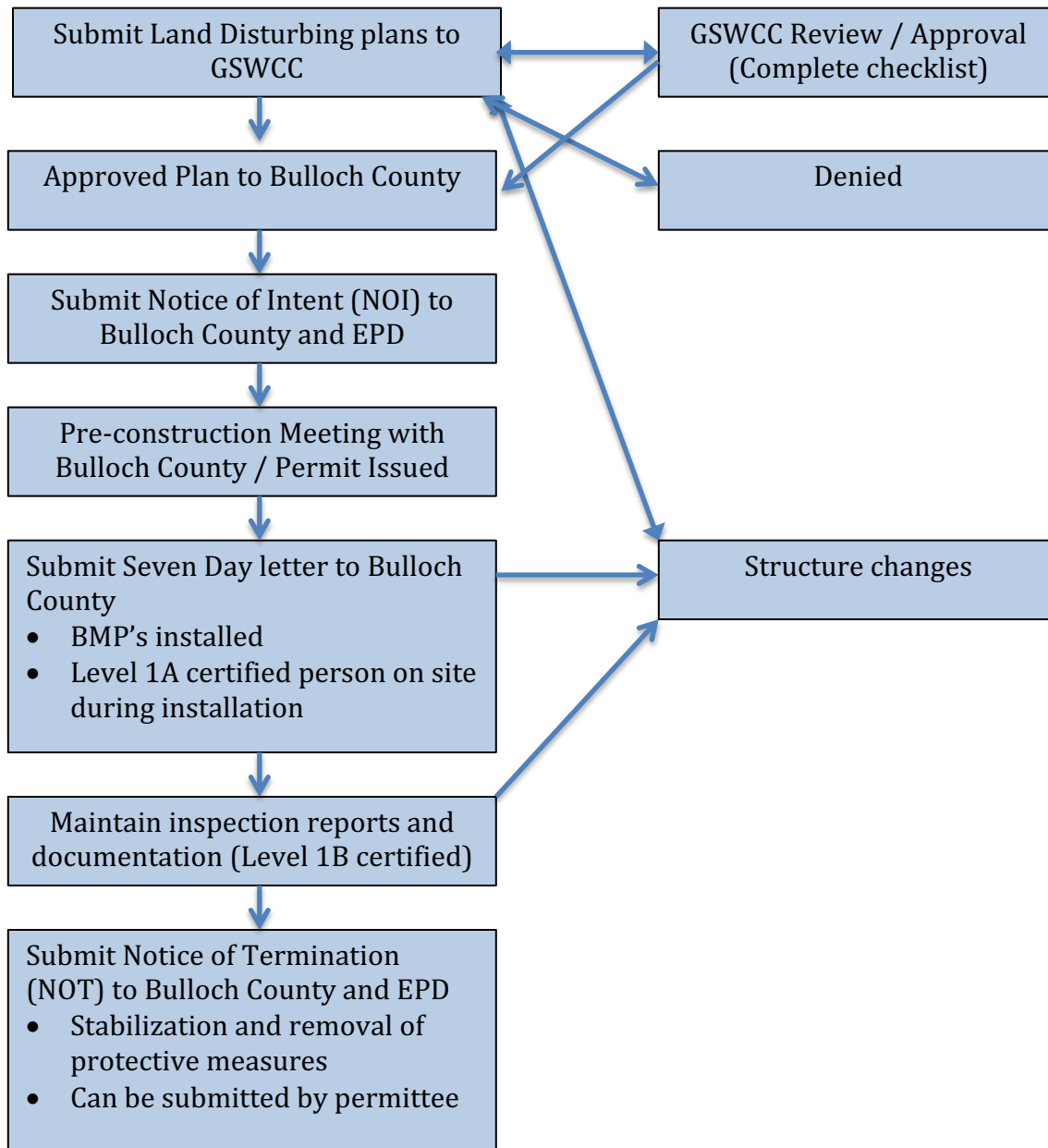


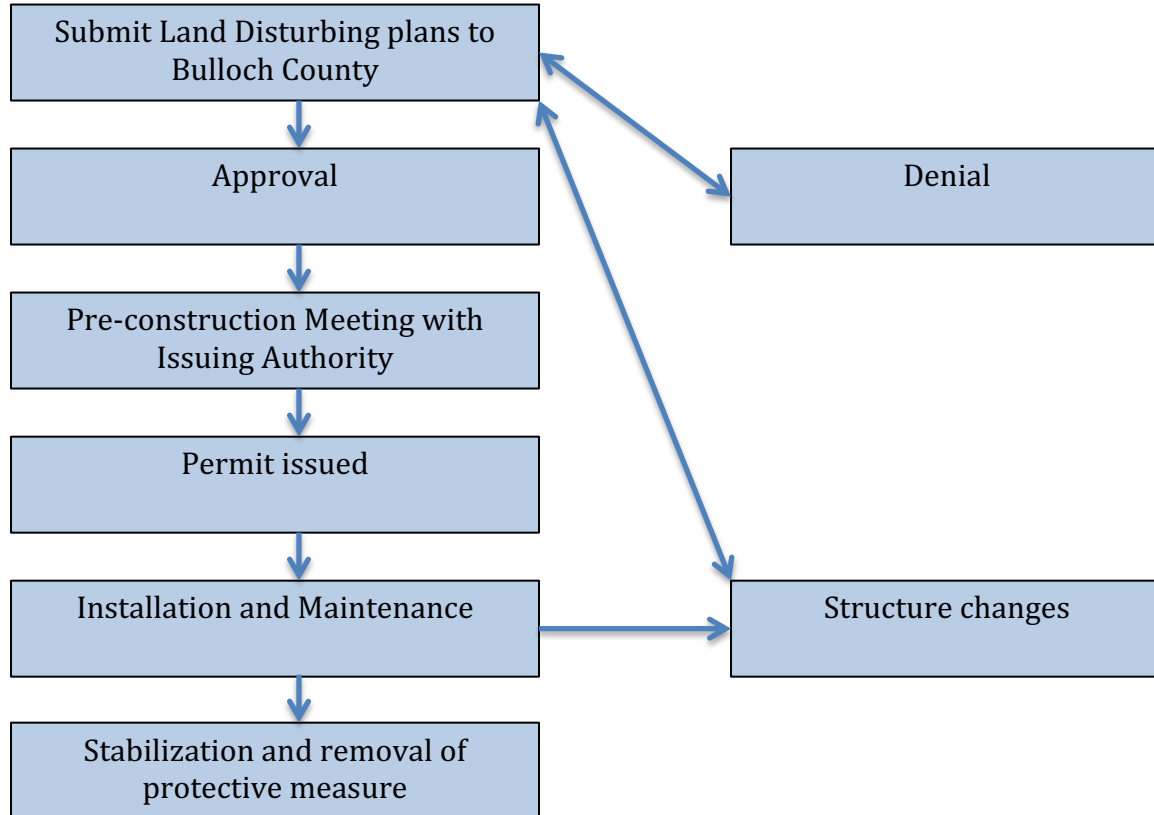
# Land Disturbance Process – NPDES Permit

## Land Disturbance is Greater Than One Acre



## Land Disturbance Process – Local Permit

**Land Disturbance is Within 200 Feet of State Waters\***



*\* Exemption: not part of a larger plan of development or not for residential development.*

## Land Disturbance Process – No Permit

**Land Disturbance is Less than One Acre**

Best Management Practices  
must be followed